

CORRECTION

Open Access



Correction: Identification and estimation of lodging in bread wheat genotypes using machine learning predictive algorithms

Ehsan Rabieyan¹, Reza Darvishzadeh¹ and Hadi Alipour^{1*}

Correction: *Plant Methods*(2023) 19: 209

<https://doi.org/10.1186/s13007-023-01088-w>

In this article the wrong figure appeared as Figs. 6 and 8.;
the figures should have appeared as shown below.

The original article has been corrected.

The online version of the original article can be found at <https://doi.org/10.1186/s13007-023-01088-w>.

*Correspondence:

Hadi Alipour

ha.alipour@urmia.ac.ir

¹Department of Plant Production and Genetics, Urmia University, Urmia, Iran



© The Author(s) 2024. **Open Access** This article is licensed under a Creative Commons Attribution 4.0 International License, which permits use, sharing, adaptation, distribution and reproduction in any medium or format, as long as you give appropriate credit to the original author(s) and the source, provide a link to the Creative Commons licence, and indicate if changes were made. The images or other third party material in this article are included in the article's Creative Commons licence, unless indicated otherwise in a credit line to the material. If material is not included in the article's Creative Commons licence and your intended use is not permitted by statutory regulation or exceeds the permitted use, you will need to obtain permission directly from the copyright holder. To view a copy of this licence, visit <http://creativecommons.org/licenses/by/4.0/>. The Creative Commons Public Domain Dedication waiver (<http://creativecommons.org/publicdomain/zero/1.0/>) applies to the data made available in this article, unless otherwise stated in a credit line to the data.

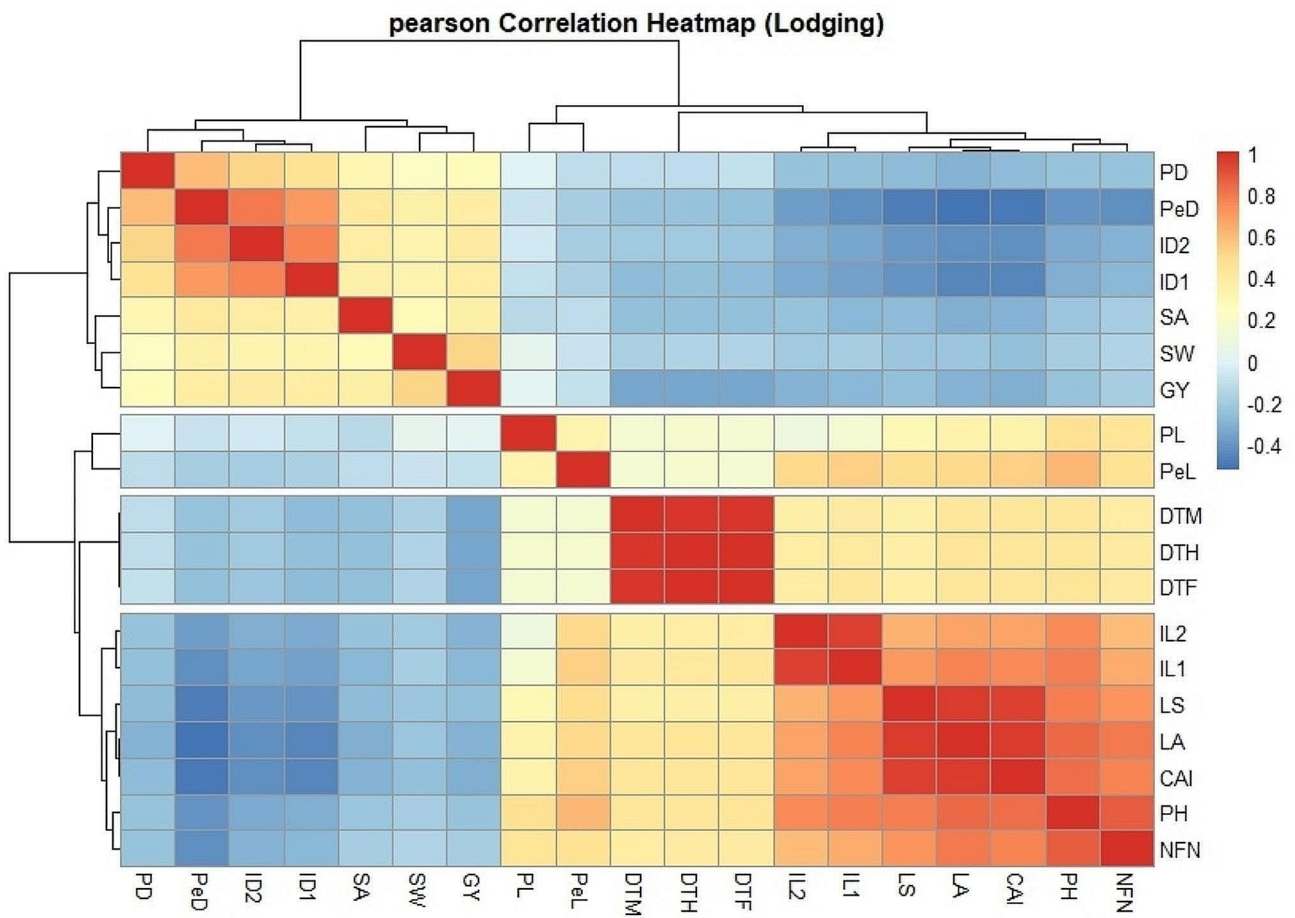


Fig. 6 Correlation coefficients between the traits in Iranian wheat cultivars and landraces. Lodged area (LA), crop angle of inclination (CAI), lodging score index (LS), plant height (PH), number of nodes (NFN), peduncle length (PL), penultimate length (PeL), internode length 1 (IL1), internode length 2 (IL2), peduncle diameter (PD), penultimate diameter (PeD), internode diameter 1 (ID1), internode diameter 2 (ID2), days to heading (DTH), days to flowering (DTF), days to maturity (DTM), spike weight (SW), spike area (SA) and grain yield (GY)

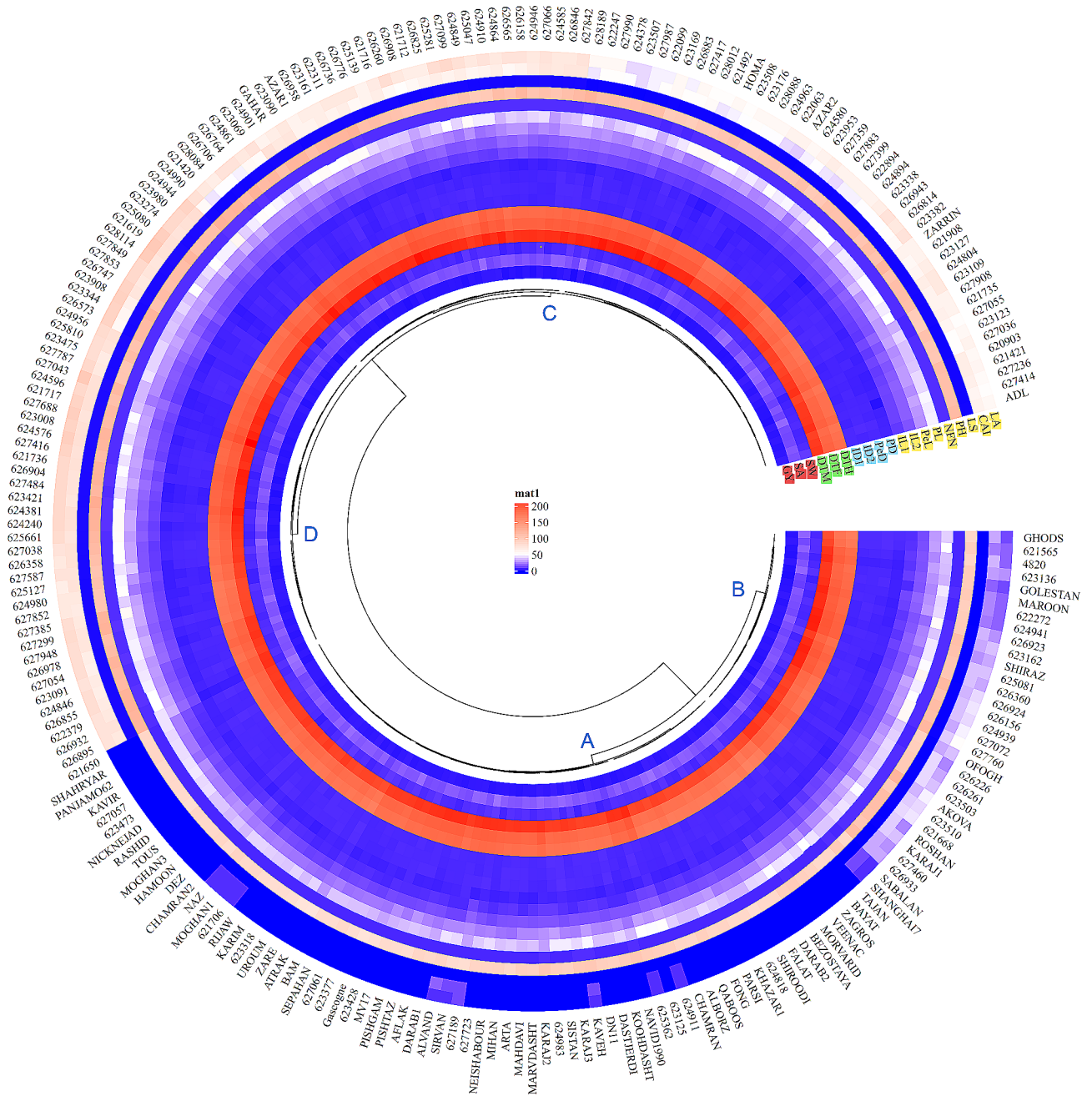


Fig. 8 Hierarchical clustering and heatmap of Iranian wheat landraces and cultivars based on the wheat traits. Lodged area (LA), crop angle of inclination (CAI), lodging score index (LS), plant height (PH), number of nodes (NFN), peduncle length (PL), penultimate length (PeL), internode length 1 (IL1), internode length 2 (IL2), peduncle diameter (PD), penultimate diameter (PeD), internode diameter 1 (ID1), internode diameter 2 (ID2), days to heading (DTH), days to fowering (DTF), days to maturity (DTM), spike weight (SW), spike area (SA) and grain yield (GY)

Published online: 08 June 2024

Publisher's Note

Springer Nature remains neutral with regard to jurisdictional claims in published maps and institutional affiliations.